

Map 1: Tlokwe Local Municipality Locality Map

Legend

- Potchefstroom
- Towns
- Roads**
 - National Roads
 - Main Roads
- Hydrology**
 - Perennial river
 - Non perennial river
 - Dams
- Boundaries**
 - North West Province
 - Tlokwe Local Municipality
 - Local Municipalities



DISCLAIMER: Whilst all possible care has been taken in producing this map, the designers can not accept any liability what so ever for any perceived inaccuracies or misinterpretation of the information shown on this map.



1:1,600,000
Projection: Africa/Albers Equal Area Conic
CRS: 24; P1: -30; P2: -20
Datum: Hotelling/Smithk 1994
July 2009

Data Analysis & Map Design: Dirk Gilliers
Tel: 053 259 1589
Email: Dirk.Gilliers@nwu.ac.za



Map 2:
Agriculture
Preference Result

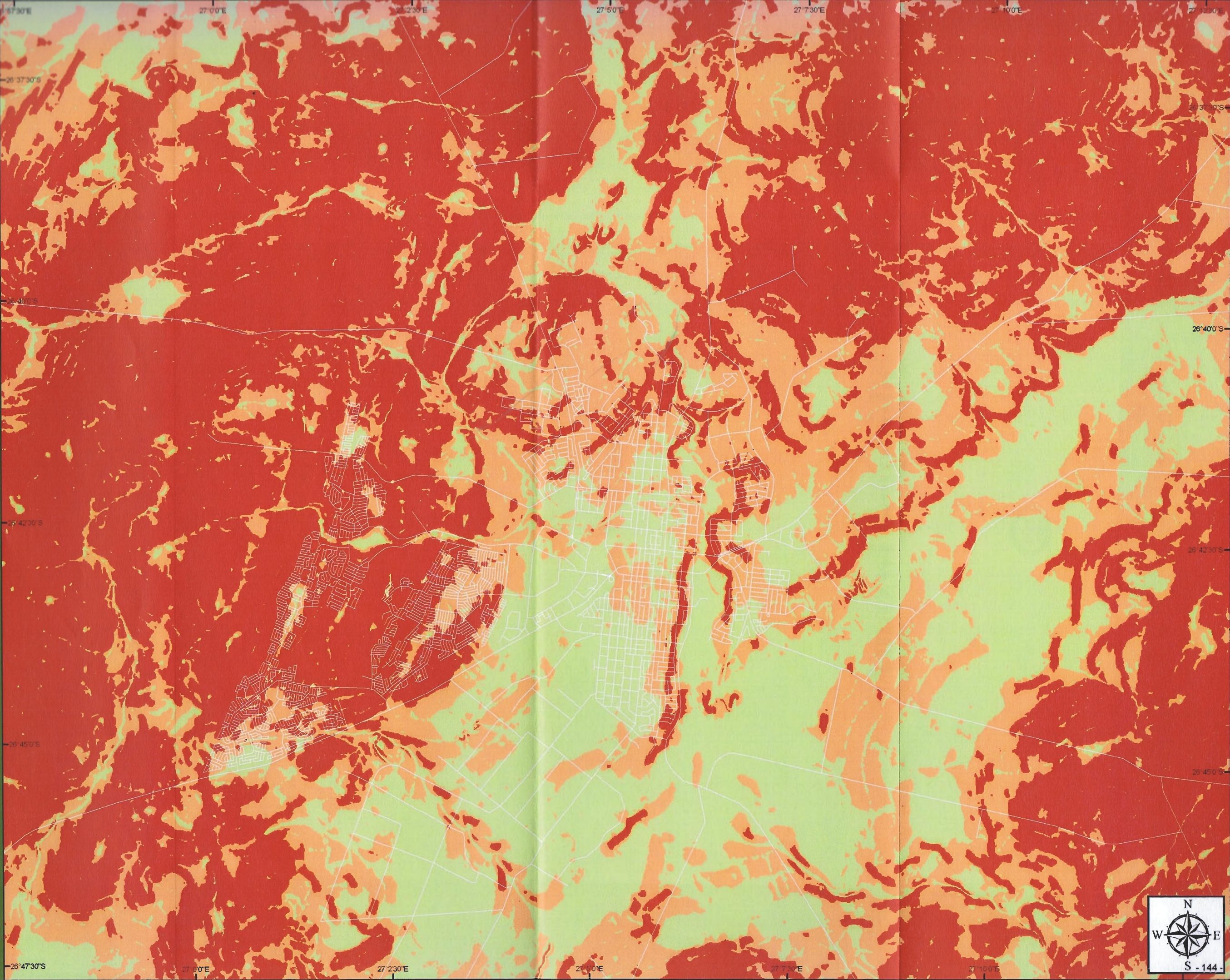
Legend

Roads

Value

High

Low



DISCLAIMER: Whilst all possible care has been taken in preparing this map, the designer can not accept any liability what so ever for any perceived inaccuracies or misinterpretation of the information shown on this map.



0 0.4 0.8 1.6 2.4
 Kilometers
 1:70,000



Projection: Africa Albers Equal Area Conic
 CM: 24; P1: -30; P2: -20
 Datum: Hartbeesthoek 1994
 July 2009

Data Analysis & Map Design: Dirk Cilliers
 Tel: 018 299 1589
 Email: Dirk.Cilliers@nwu.ac.za




Map 3:
Conservation Preference Result

Legend

 Existing Conservation Areas
 Roads

Value

 High
 Low



DISCLAIMER: Whilst all possible care has been taken in preparing this map, the designer can not accept any liability what so ever for any printed inaccuracies or misinterpretation of the information shown on this map.



1:70,000
 Projection: Africa Albers Equal Area Conic
 CM: 24; P1: -30; P2: -20
 Datum: Hartbeeshoek 1994
 July 2009

Data Analysis & Map Design: Dirk Cilliers
 Tel: 018 299 1589
 Email: Dirk.Cilliers@nwu.ac.za



Map 4:
Urban Preference
Result

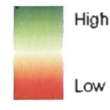
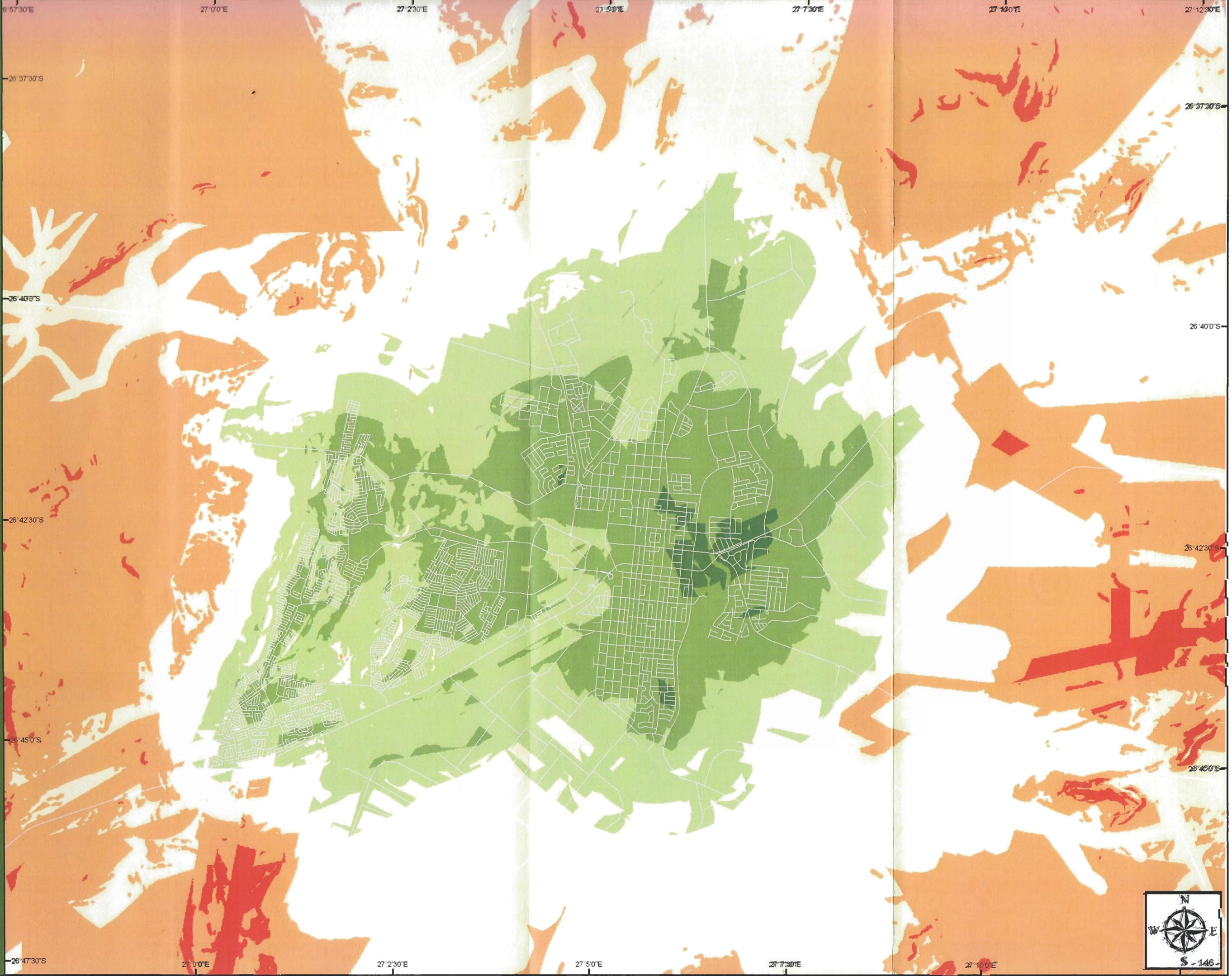
Legend

Roads

Value

High

Low

DISCLAIMER: Whilst all possible care has been taken in preparing this map, the designers can not accept any liability what so ever for any perceived inaccuracies or misinterpretation of the information shown on this map.



Kilometers
1:70,000
 Projection: Africa Albers Equal Area Conic
 CL: 24; P1: -30; P2: -20
 Datum: Hartbeesthoek 1994
 July 2009

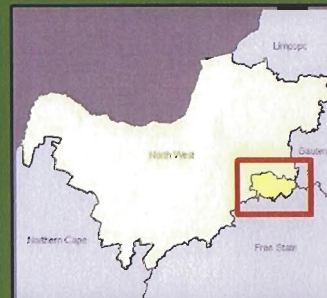
Data Analysis & Map Design: Dirk Gillies
 Tel: 018 299 1593
 Email: Dirk.Gillies@nwu.ac.za



Map 5:
Areas of Potential
Land Use Conflict

- Legend**
-  Roads
 -  Existing Conservation Areas
 -  Water
 - Areas of Conflict**
 -  Major Conflict
 -  Urban/Agriculture Conflict
 -  Urban/Conservation Conflict
 -  Agriculture/Conservation Conflict
 -  No Conflict
 -  Excluded by Development Mask

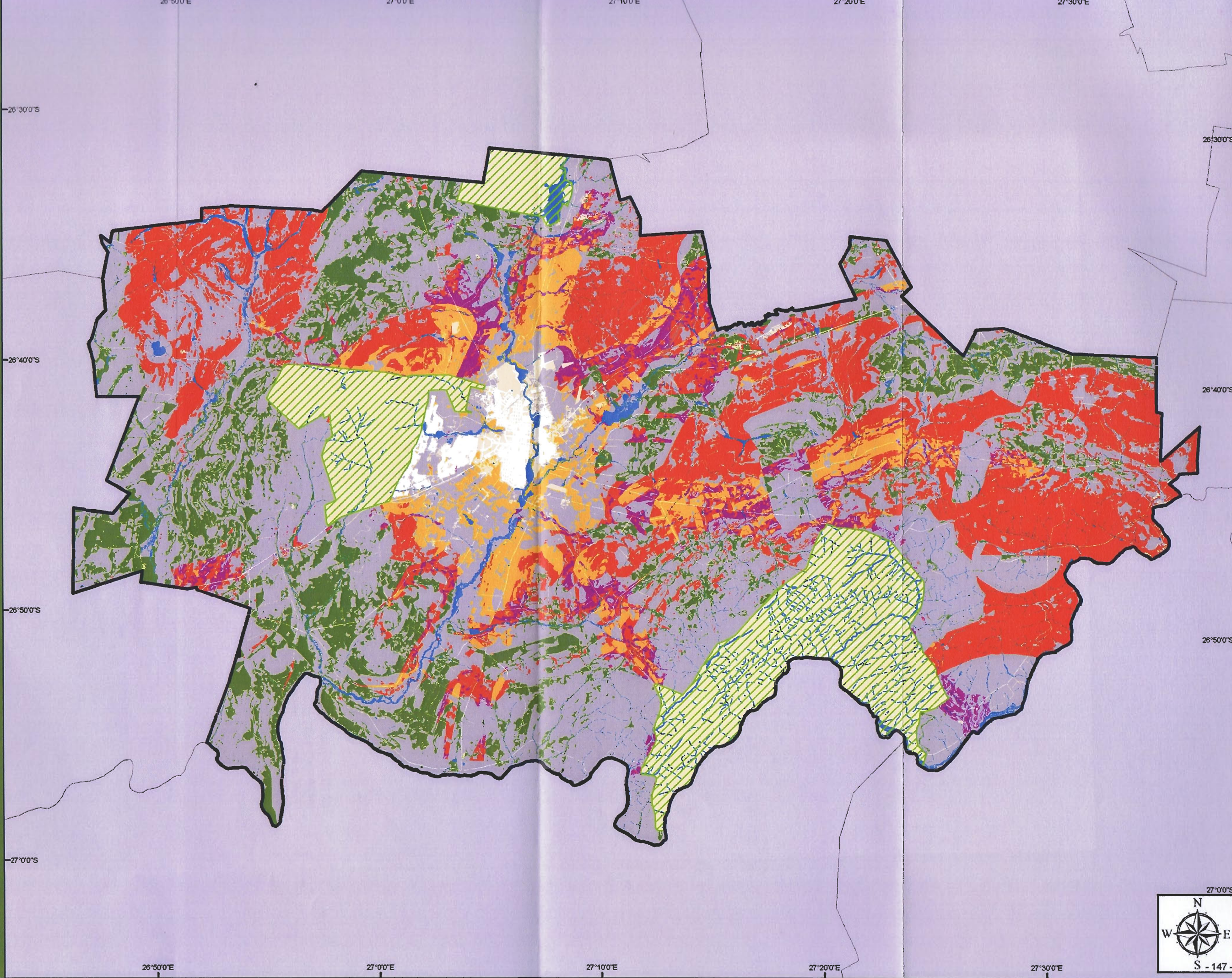
DISCLAIMER: Whilst all possible care has been taken in preparing this map, the designer can not accept any liability whatsoever for any inaccuracies or misinterpretation of the information shown on this map.



1:250,000

Projection: Africa Albers Equal Area Conic
 CM: 24; P1: -30; P2: -20
 Datum: Hartbeesthoek 1994
 July 2009

Data Analysis & Map Design: Dirk Gilliers
 Tel: 018 299 1559
 Email: Dirk.Gilliers@nwu.ac.za

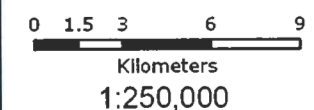


Map 6:
Final Land Use
Allocation

Legend

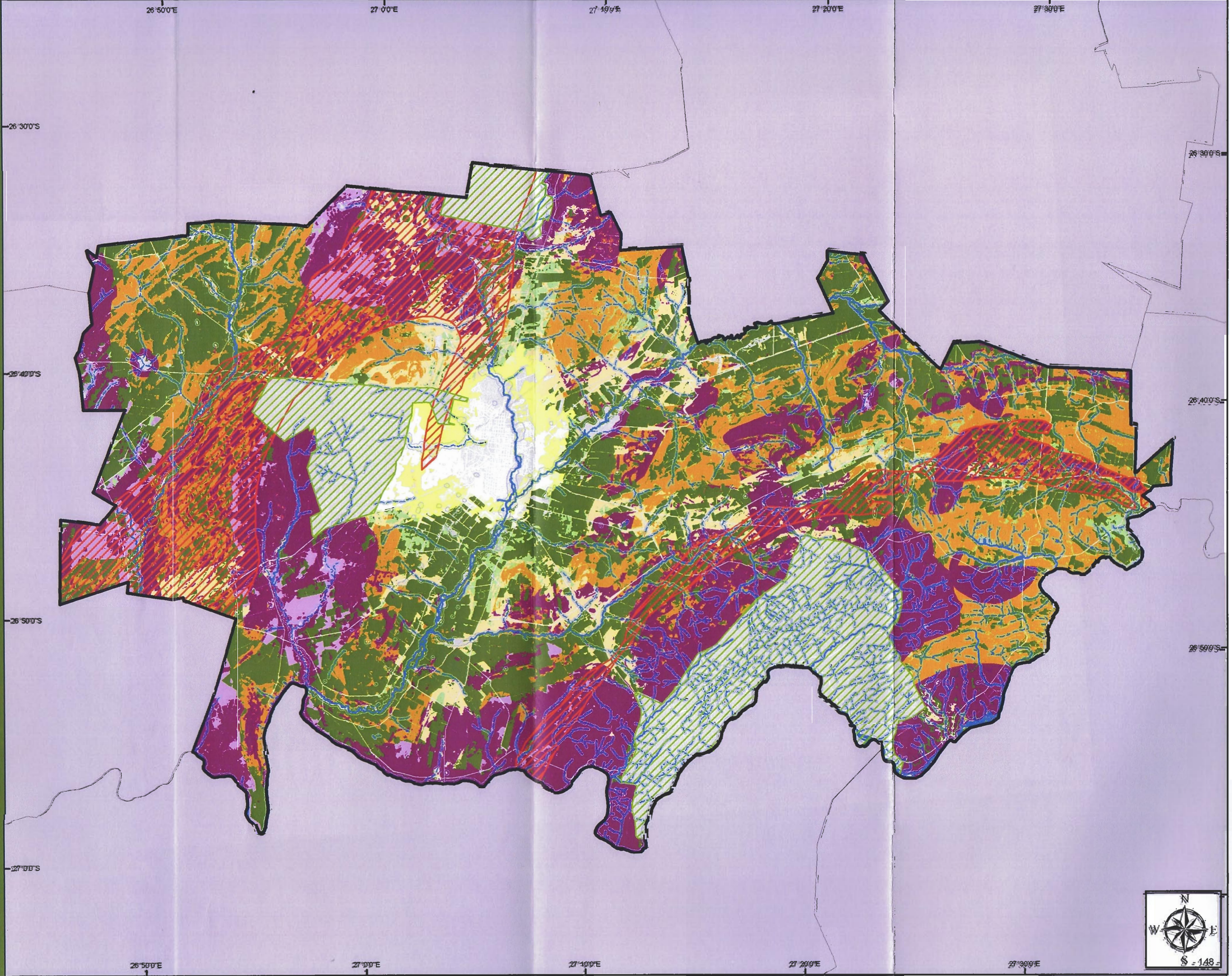
- Roads
- Hydrology Buffer (100m)
- Existing Conservation Areas
- Dolomite
- Land Use Allocation**
- Urban
- Urban (In Conflict)
- Long Term Urban (In Conflict)
- Agriculture
- Agriculture (In Conflict)
- Conservation
- Conservation (In Conflict)
- Major Conflict
- Water
- Existing Urban Land

DISCLAIMER: Whilst all possible care has been taken in preparing this map, the designer can not accept any liability what so ever for any perceived inaccuracies or misinterpretation of the information shown on this map.



Projection: Africa Albers Equal Area
 GNM 24: P1: 20; F2: 20
 Datum: Harebeshoek 1994
 July 2009

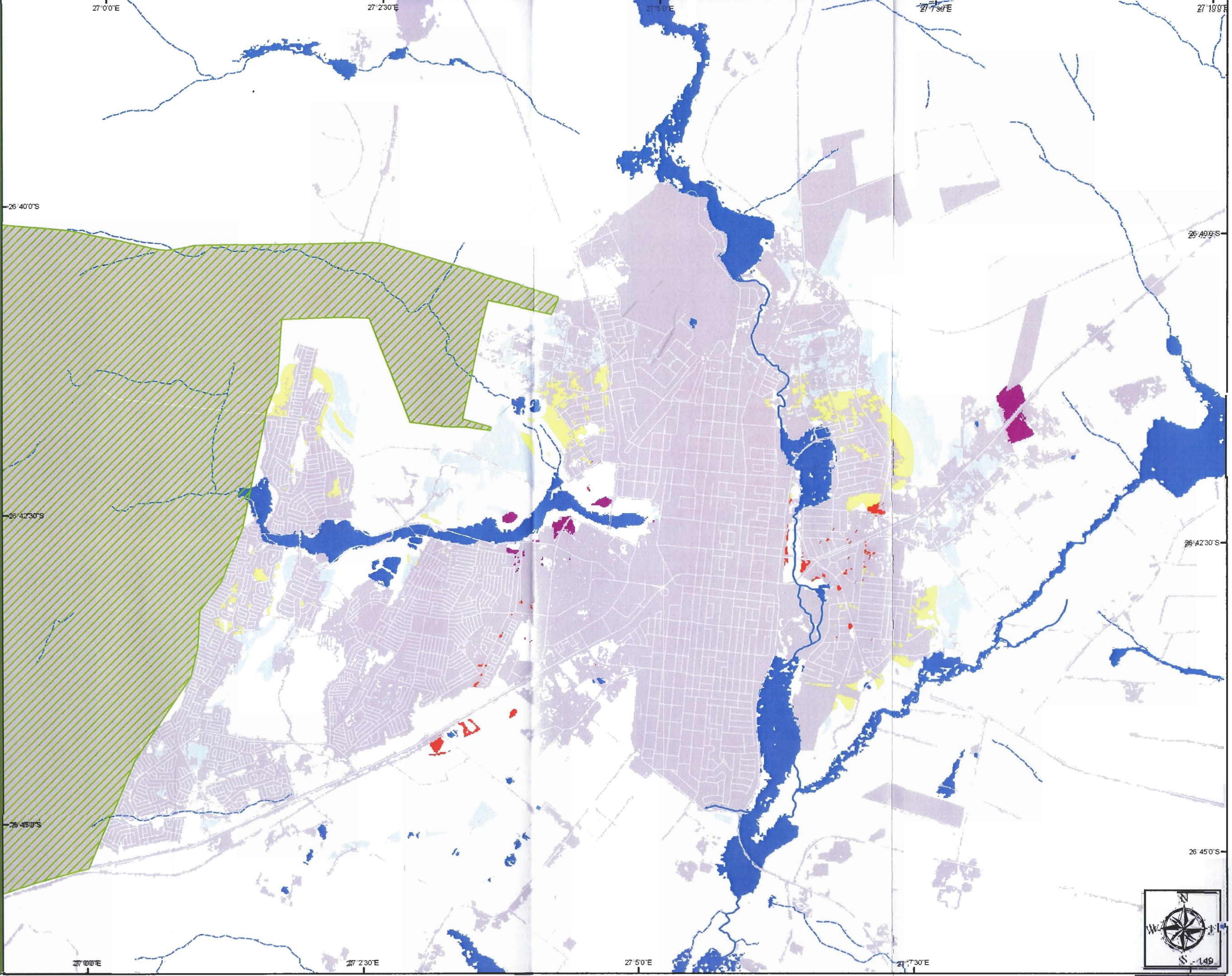
Data Analysis & Map Design: Dirk Gillies
 Tel: 018 299 1569
 Email: Dirk.Gillies@nwu.ac.za



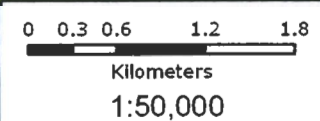
Map 7:
Growth Scenario -
Potchefstroom in 2030

Legend

- Roads
- Highveld National Park
- Water
- Existing Urban Land
- Future Urban Land**
- Most Suitable Urban Land
- 2030 Scenario**
- Industrial
- Commercial / Business
- Residential



DISCLAIMER: While all possible care has been taken in preparing this map, the designer can not accept any liability whatsoever for any inaccuracies or omissions of the information shown on this map.



Projection: Africa Albers Equal Area Conic
 CM: 24; P1: -30; F22-220
 Datum: Hartbeestreek 1994
 July 2009

Data Analysis & Map Design: Dirk Gilliers
 Tel: 018 299 1689
 Email: Dirk.Gilliers@nwu.ac.za



Map 8:
 Comparison between
 SDF and analysis results

Legend

- Proposed urban edge
- SDF Urban edge
- Conflict between analysis & SDF
- Highveld National Park
- Roads

2030 Scenario

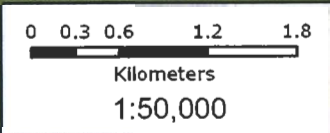
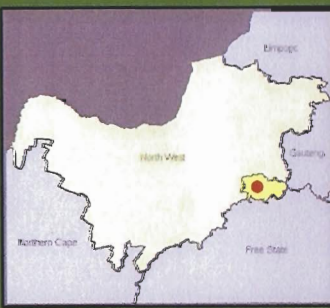
- Industrial
- Commercial / Business
- Residential
- Water
- Existing Urban Land

Priority Nodes

- Desired Growth Direction

A - Low income development
 B - Integrated development (medium income)
 C - High income development
 D - Medium and high income development
 E - Commercial development
 F - Light industrial development
 G - Heavy industrial development

DISCLAIMER: Whilst all possible care has been taken in preparing this map, the designer can not accept any liability what so ever for any perceived mistakes or misinterpretation of the information shown on this map.



Projection: **WGS 84 / UTM**
 Zone: **36 S**
 Datum: **WGS 84**
 Date: **July 2009**

Map Design: **Dirk Cilliers**
 Email: **Dirk.Cilliers@nwu.ac.za**

